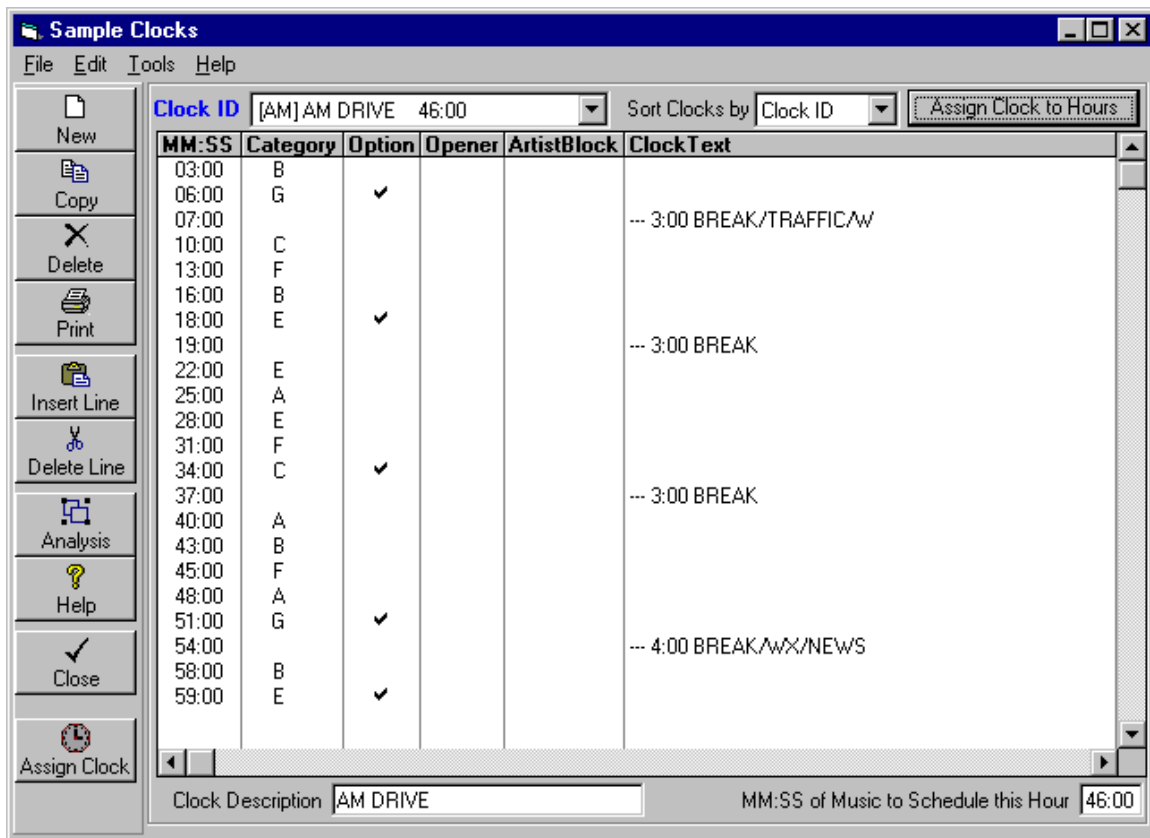


Format Clocks

Format Clocks Defined

These Format Clocks are a one-hour list of Music Categories from which Natural Music selects songs when generating a Music Log for any hour and day to which that Format Clock is assigned. There are 676 clocks available (designated AA-ZZ) to be designed by you. View and Edit Format Clocks by clicking [Setup] Clocks] from the Natural Music main screen.



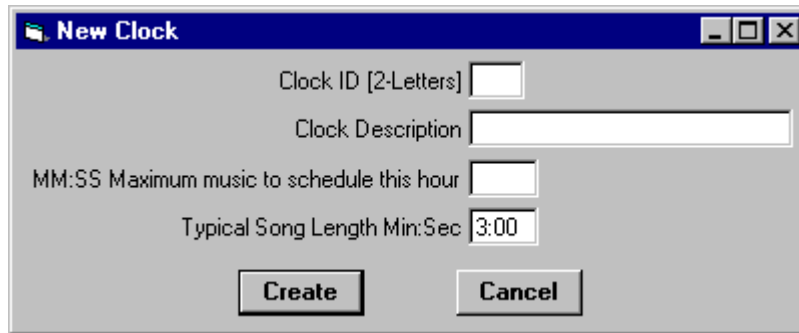
You may select the Format Clock to be displayed/edited/assigned in the **Clock ID** dropdown box.

- See the next page to create a new Format Clock or copy existing Format Clocks.
- See Page 4-3 to build or edit a Format Clock
- See page 4-5 to assign the Format Clocks

Create and Copy Format Clocks

New Format Clock

Click **[Setup][Clocks][New]** to create a new empty clock.



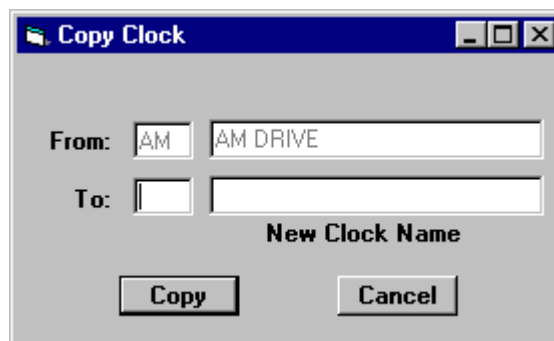
The 'New Clock' dialog box has a blue title bar with the text 'New Clock'. It contains the following fields and buttons:

- Clock ID [2-Letters]:
- Clock Description:
- MM:SS Maximum music to schedule this hour:
- Typical Song Length Min:Sec:
- Buttons: **Create** and **Cancel**

Be sure to enter a unique 2-Letter code to identify the new clock. Also enter a Clock Description and the **mm:ss Maximum Music** (if you want to restrict the amount of music in the hour). The **Typical Song Length** determines the default time spacing for each song slot. This may be manually changed after the clock is created. Click **[Create]** when ready to proceed.

Copy Format Clock

Click **[Setup][Clocks][New]** to create a new empty clock. With the Format Clock you'd like to copy *from* displayed, click on the **[Copy Clock]** button.



The 'Copy Clock' dialog box has a blue title bar with the text 'Copy Clock'. It contains the following fields and buttons:

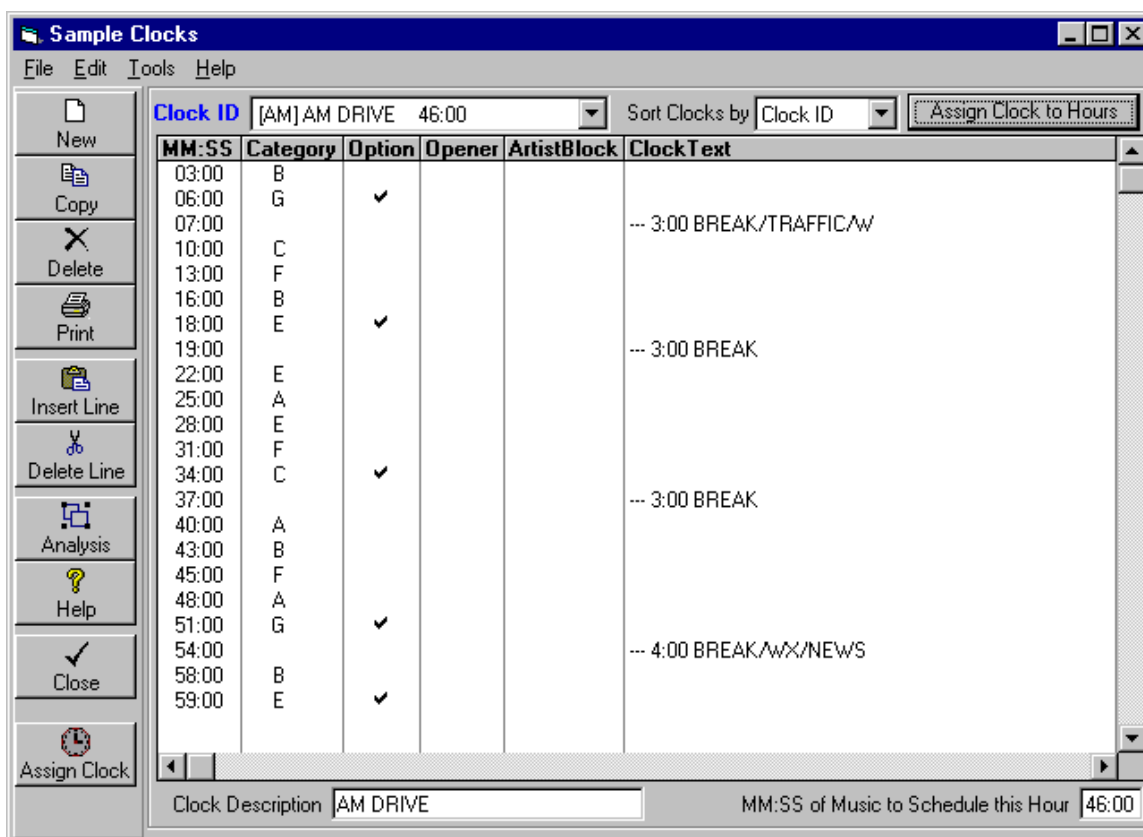
- From:
- To:
- New Clock Name:
- Buttons: **Copy** and **Cancel**

Enter a Valid 2-letter code for the Format Clock you'd like to copy *to*. If the *copy-to* Clock doesn't exist it will be created. If you click **[Copy]** the *copy-to* clock will contain an exact copy of the *copy-from* clock's data.

Edit Format Clocks

To Edit a Format Clock, click **[Setup] Clocks** from the Natural Music main screen. Then select the Clock to be edited in the Clock ID dropdown box.

AUTOMATION USERS See the [Interfacing to Automation](#) section of this manual **before** entering your clocks to see if there are any special Format Clock requirements for your automation system.



Format Clock Description

You can enter an optional description for this clock.

Format Clock MM:SS of Music to Schedule this Hour

You can enter the minutes of music to be logged in this hour. If you enter a value [which MUST be in the form of minutes and seconds as MM:SS], optional songs on the Format Clock will be dropped to meet your limit.

Create and Edit Format Clocks(cont)

Format Clock MM:SS

This is the estimated event start time in Minutes:Seconds (not Hours:Minutes!) Seconds are usually :00 unless an event must start at a specific Second.

Format Clock Music Category

For any slot in the Format Clock where a song should be played, select a Music Category from the dropdown selection box.

Format Clock Optional Songs

[\[Left-Click\]](#) in the Optional column to get a check mark to make this song slot optional, and Natural Music will drop this song if needed so as not to exceed the "minutes of music" limit, if any. [\[Left-Click\]](#) again to remove the check mark, if desired.

Format Clock Opener

If you enter *, only songs with * opener code will be scheduled in this slot. Starting in NM5 version 5.0.156, you can use any single-character opener code such as A,B,C,1,2,*, etc. If you put an opener of any kind on the clock, NM5 is forced to select a song with a matching Opener code. If you leave the Opener code blank on the clock ANY Opener-coded song (or without a song with a blank Opener code) can be logged in that slot of the clock.

Format Clock Artist Block

If you want an artist block (several songs from the same artist), [\[Left-Click\]](#) in the Artist Block column to get a check mark indicating that the artist from the previous song slot will be repeated in this slot. [\[Left-Click\]](#) again to remove the check mark, if desired. See **Artist Blocks** later in this section for more information on creating Artist Blocks.

Format Clock Text

To enter text, just leave the Music Category column blank. Then you can enter stop sets, reminders, automation commands, etc in the **ClockText** column on the Format Clocks. These text items will appear on the Music Logs

- **Automation Requirements** See [Automation Interfacing](#) to see if there are any special clock requirements for your automation system. If you need to send commands to an automation system using this Text Column you will need to place the character **&** at the beginning of the Text column. Text which does not have the **&** command marker at the beginning is not sent to Automation systems. Also see [Automation Logs, Commands](#) in the index of this manual for more detailed information on use of the clock text to play audio and send automation commands.
- **Music Totals** You can also force an Hour-Total or Music-Sweep-Total to be printed on the music log by entering one of the following in the **ClockText** column. Do not enter anything else on that line of the Format Clock. The [] brackets are required.
[\[SweepTotal\]](#) Total length of items scheduled since the previousSweepTotal entry.
[\[HourTotal\]](#) Total length of items scheduled in that hour.
- **Music Log PageBreaks** By default, Natural Music 5 does not send a PageBreak to the printer at the end of each hour so the Music Log hours are printed one after the other on each page. If you prefer to print one hour per page on the Music Log, just insert [\[PageBreak\]](#) by itself as the last event in the **ClockText** column your Format Clocks.

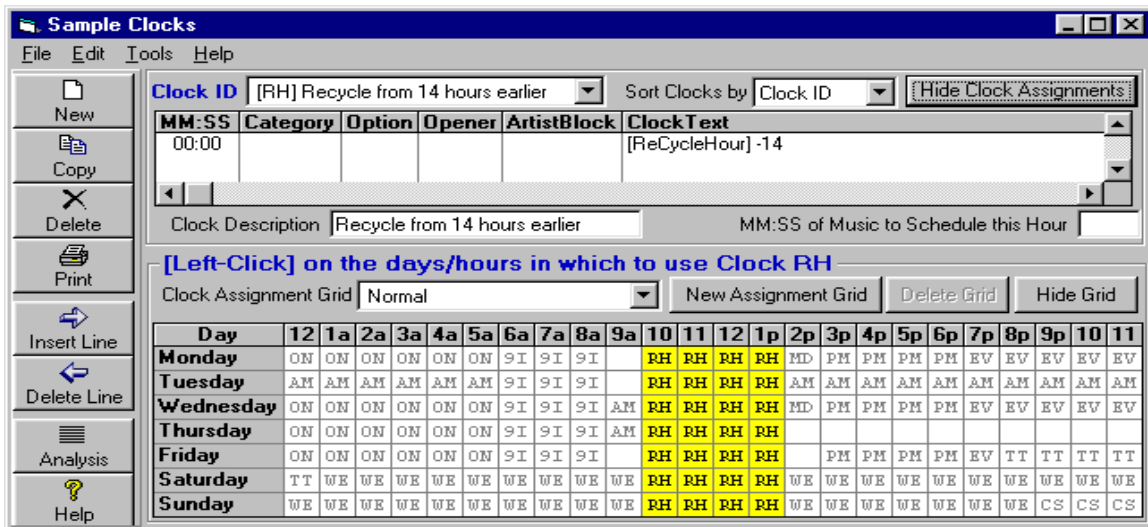
Create and Edit Format Clocks(cont)

Format Clock Text [cont]

- Recycle Music Hours** Users can automate the music recycling function [if used] as described in chapter 6 by placing the following text in the first line in an otherwise empty clock and assigning that clock to any hours into which you want to recycle previous music schedules. See "recycling music hours" in chapter 6 of this manual for a complete explanation of how recycling works.

[RecycleHour] -## Where -## is the number of hours to look back. The minus is required.

For example, if you want to recycle the 8PM, 9PM, 10PM and 11PM previous day's music hours into the current day's 10AM, 11AM, 12noon, and 1PM hours, that would be entered as minus 14 hours since you want the recycle to look back 14 hours. The clock containing the recycle command would be assigned to 10AM, 11AM, 12noon, and 1PM each day. The previous day's 8PM hour would be recycled into the current day's 10AM hour, 9PM into 11AM, 10PM into 12noon, and 11PM into 1PM.



Format Clock Text for Date-Sensitive items

You may also place date specific items into your clocks and the dates are inserted per the date format you use. Example: Suppose you want to schedule an audio cut on your Automation system which you name ABCD followed by the month and date. The audio cut to be played on Nov 28 would be ABCD1128. You can enter &ABCD[mmdd] in the ClockText column of your format clock. You may put a space and a description after the date/time items. The following date formats are accepted. The brackets are required.

[mmdyyy]	[mmdyy]	[mddd]	[ddmyyyy]	[ddmyyyy]
[ddmm]	[yymmdd]	[yyddmm]	[yyyymmdd]	[yyyddmm]
[mmm]	= 3-character month abbreviation		[mmmm]	= Full month name
[yy]	= 2-digit year		[yyyy]	=4 digit year
[mm]	= 2-digit month-of year ##		[dd]	= 2-digit day-of-month ##
[Day]	Abbreviated day name: Mon, Tue, Wed, etc.			
[DayNum]	The number of the day-of-week 1=Mon, 7=Sun.			
[DayNum_S]	# of the day-of-week: 1=Sun, 7=Sat.			
[WeekNum]	# of the week-of-year: [week starts Monday]			
[WeekNum_S]	# of the week-of-year: [week starts Sunday]			
[NEXT]	The NEXT date after the log date is used as shown at 59:00 on the next page.			

yy, and yyyy indicates 2 or 4 digit year. mm indicates 2-digit month. dd indicates 2-digit day-of-month. **See examples on next page.**

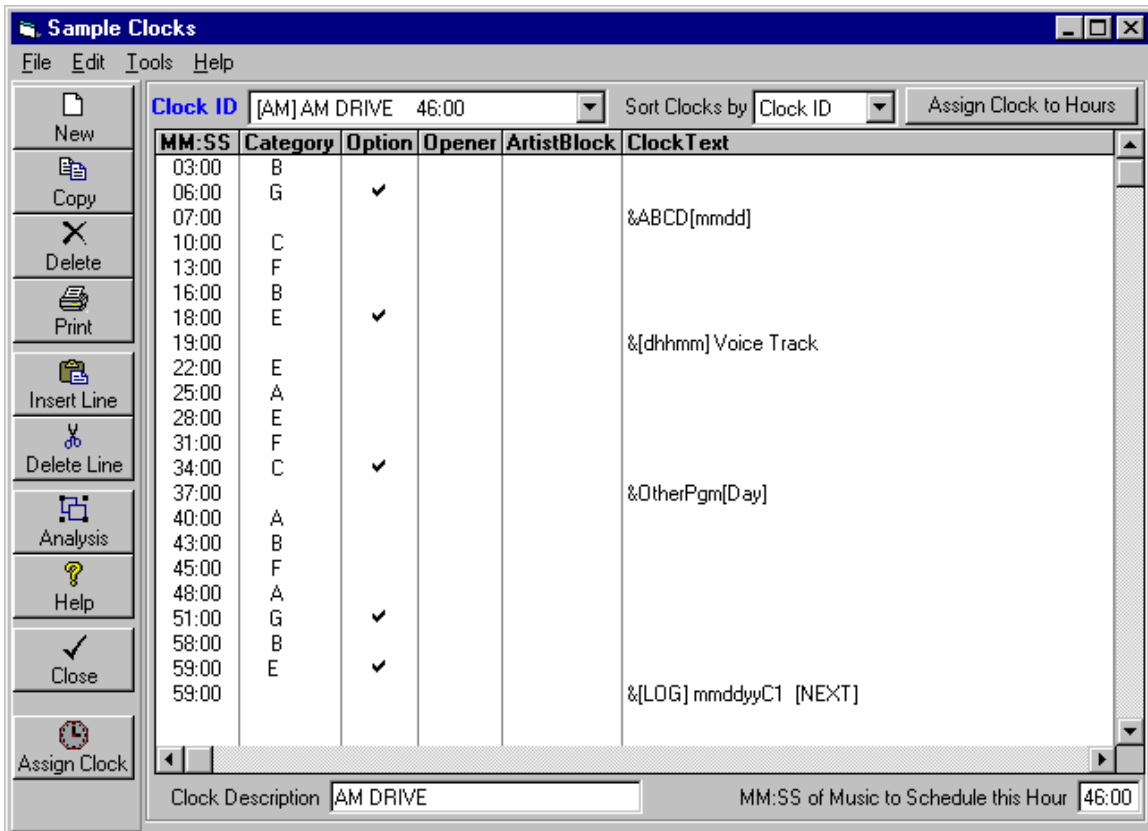
Create and Edit Format Clocks(cont)

Format Clock Text Voice Tracks and other Time-Sensitive items

Note: This does not apply to Scott Studios voicetracks. See Scott Studios section in Chapter 7 of this manual. You may also place time-specific items into your clocks and the times are automatically inserted per the time format you use. Example: Suppose you want to schedule an automation Voice Track. You can use any naming convention you want. Suppose you name your Voice Tracks as the day# followed by the hour followed by the minute in the hour. The VoiceTrack for Tuesday at 1:19PM would be converted by Natural Music to 21319 (Tuesday is day 2, 1PM is hour 13) and can be automatically entered on your clocks as &[dhhmm] in the ClockText column of your format clock. You may put a space and a description after the date/time items. The following time formats are accepted. The brackets are required. You may add other characters before or after bracketed text.

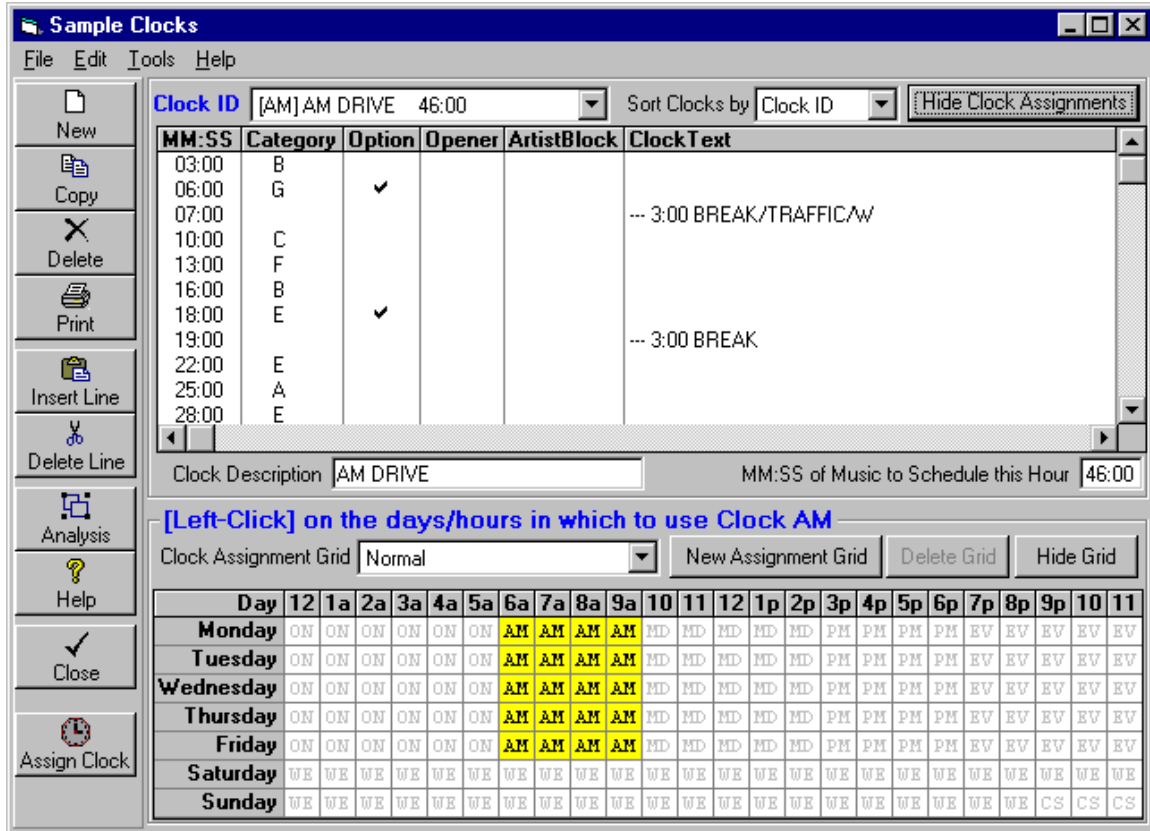
- [hh] or [nn] or [ss] or [hhmm] or [hhmmss] or [hh:mm:ss] (nn=minutes)
- [dhhmm] or [dhhmmss]
- [#####] or [####] or [###] or [#]
- [d###] or [d##]

hh indicates hour, mm indicates minutes, ss indicates seconds in the minute, d indicates day # in week (Monday is day 1, Sunday is day 7). [#####] to [#] indicates a sequential event counter padded to the requisite number of digits with 0's. This means each time NM5 sees one of these [#] commands it increases by 1 for each time it is used in that day's log and left pads to at least the requisite number of digits with 0's. If the event counter requires more digits than allowed within the [], all digits are displayed. Example: [#] with event counter 99 becomes &99. d### or d## indicates the same counter with a day number preceding it.



Assigning Format Clocks

You may view your Format Clocks by clicking **[Setup] Clocks** from the Natural Music main screen. To assign the Format Clocks to be used in specific hours and days, click the **[Assign Clock]** button to get a day/hour grid as shown below.



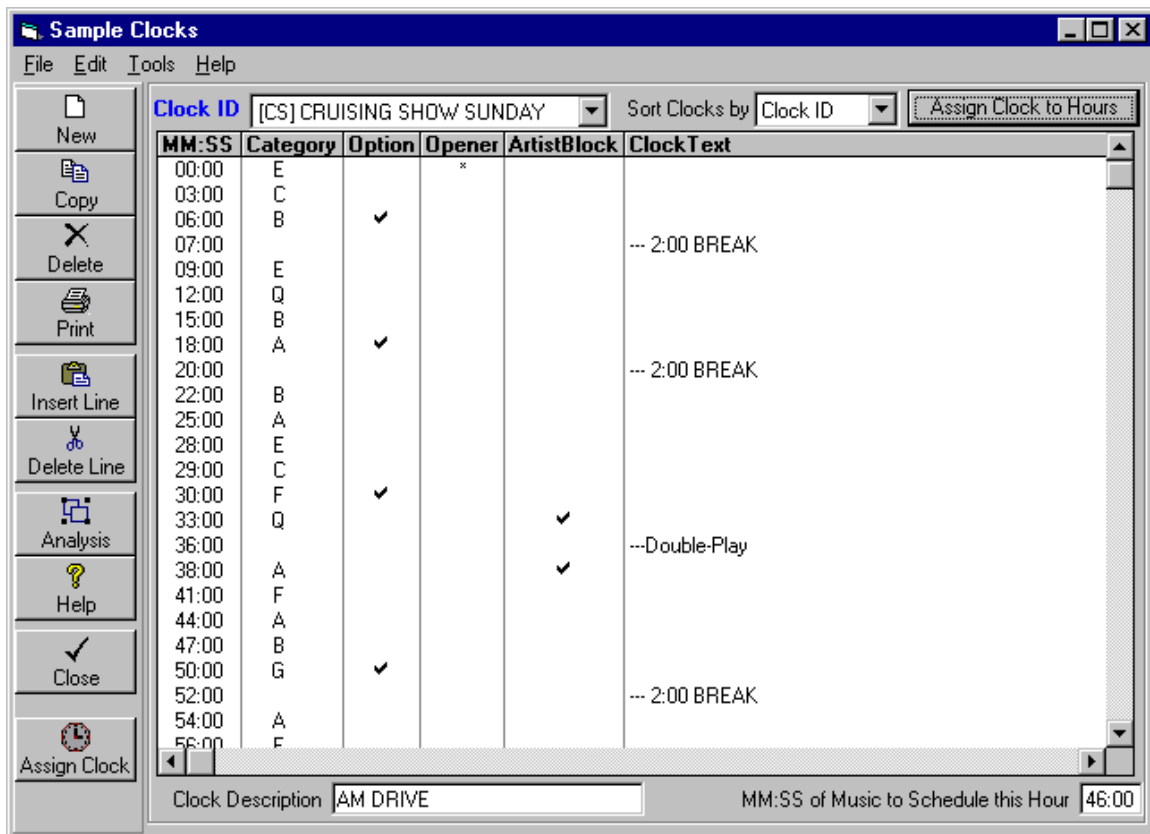
Assignment Grids You can create as many Clock Assignment Grids as you like. You MUST have at least one named **Normal** which is all most stations will use. Other Clock Assignment Grids may be created for special seasons (like Christmas) or for other purposes. When you create a New Music Log, you can select which Clock Assignment Grid to use for that day's Music Log.

Assign Clocks to Days / Hours Be sure you select the Clock Assignment Grid that you want to use in the Clock Assignment Grid dropdown box. You can assign any of your Format Clocks to any hour(s) of any day(s) in that grid.

- Format Clocks are assigned to the day(s) and hour(s) for which they are to be used on a grid that shows days as rows and hours as columns.
- To assign a Format Clock for a day/hour, select the desired Clock from the dropdown list at the top of the screen. **[Left-Click]** the grid cell for hour(s) and day(s) to assign the displayed Clock.
- The 2-letter ID of that clock will appear in the cell.
- To clear a cell (to make its clock blank, just **[Right][Click]** in that cell. Natural Music will not create a Music Log for any day/hour that is blank.

Artist Blocks

An **Artist Block** forces 2 or more songs from the same artist to play back-to-back. In the Format Clock, place a check mark in the **ArtistBlock** column as shown below for each line which is part of an "Artist Block". The clock show below will play the same artist at 33:00 and 38:00.

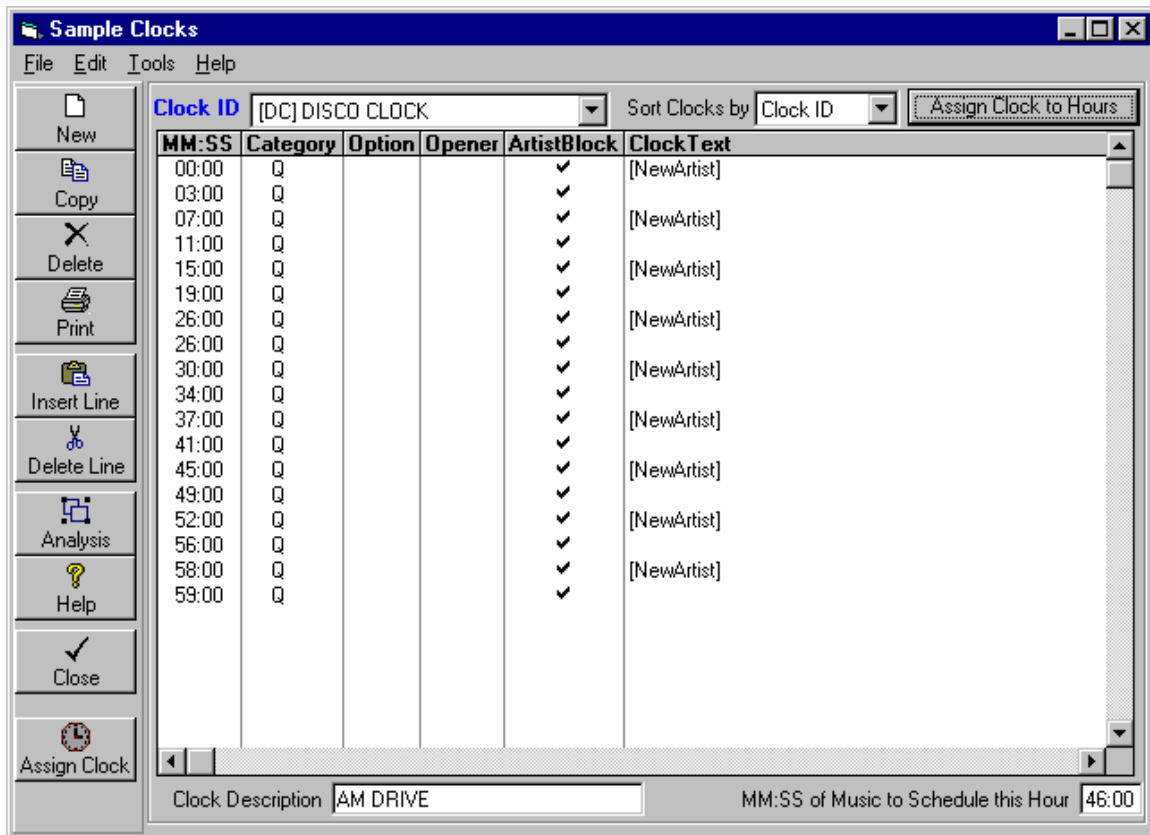


You may get excessive missed songs in Artist Blocks. This can be caused if an artist has few songs in your library, if many of an artist's songs are precluded from filling an Artist Block by rules violations, or by Category Search-Depth restrictions. NM5 allows you to override some normal Rule settings. See [Suspending Rules in Artist-Blocks](#) in Section 5 of this manual.

Continued on next page

Artist Blocks (cont)

As shown on the previous page, you place a check mark in the **ArtistBlock** column to force an **Artist Block** of 2 or more songs by the same Artist. Suppose you want to do several Artist Blocks back-to-back for different Artists, such as a two-fer hour. This is done by placing check marks in the **ArtistBlock** column on every line of the clock to indicate an Artist Block. To tell NM5 where to start each new artist, enter the text **[NewArtist]** in the ClockText Column of the clock on any line on which you want to start a new artist block.

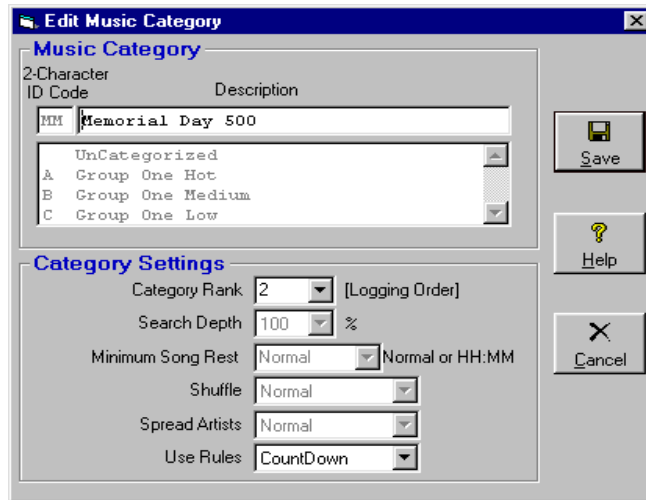


CountDown Shows

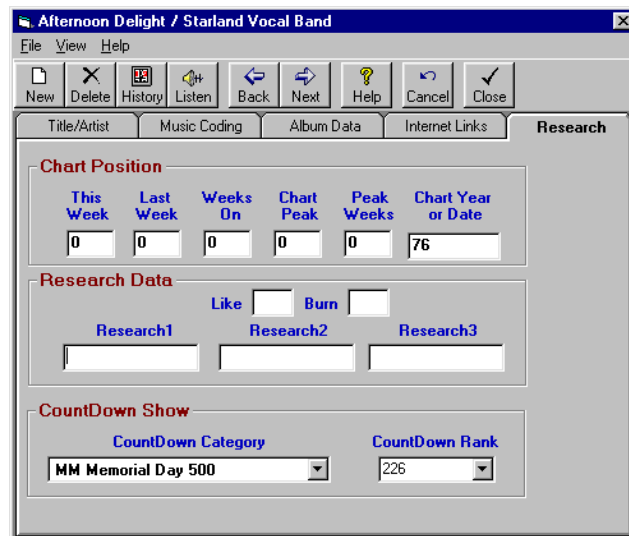
Natural Music has the ability to log "countdown" type shows. This means you can put the songs into a COUNTDOWN CATEGORY and also leave the songs in their regular category at the same time.

This is done as follows:

1. Create a Music Category for your countdown songs and assign it a "UseRules" value of "COUNTDOWN". This turns off all music testing rules, including daypart testing, artist block testing, and also-protect testing] and simply plots songs in descending order of the COUNTDOWN CATEGORY RANK as entered for each song. See [Music Categories](#).



2. In **[SETUP][CLOCKS]**, select that category as desired. You can create special clocks as desired and assign them to the hours during which the countdown show runs.
3. In **[Music Library][Song Browser]**, open each song and click the "Research" tab and select the appropriate COUNTDOWN CATEGORY and enter the COUNTDOWN RANK. You can also drag-and-drop or mass-change songs into the COUNTDOWN CATEGORY but you must enter the COUNTDOWN RANK individually. Note: The COUNTDOWN CATEGORY and CATEGORY of a song are 2 different entries.



CountDown Shows (cont)

4. When Natural Music generates the log and sees the "CountDown Category" on the clock, it will retrieve the songs with that CATEGORY assigned to the COUNTDOWN CATEGORY value on those songs. It will plot them in the reverse order of the value you enter in the COUNTDOWN RANK value on each song with that COUNTDOWN CATEGORY.

NOTES:

- If you run a continuous Countdown show such as a weekend or holiday countdown, NM5 will automatically pick up from day-to-day the last song played in the previous day and move on with the countdown. If the countdown stops for more than a full day, the next time you log it, the countdown will start over at the bottom of the Countdown rank and work up.
- Countdown songs MAY NOT be optional on the clocks.
- Countdown shows do not have to be continuous, and you can intersperse other non-countdown categories in the clocks. These non-countdown Categories may or may not be "optional" on the clocks.

Other Special Shows

Natural Music has the ability to log other special type shows using a secondary category for each song. The only difference between these special shows and "CountDown" shows is that Countdown shows are plotted in exact order, while "special shows" randomly plot the music from the "Special Show" category into the show when that category is entered onto your clocks

This means you can put the songs into a SPECIAL SHOW CATEGORY and also leave the songs in their regular category at the same time.

This is done as follows:

1. Create a Music Category for your special show songs and assign it a "UseRules" value of "SPECIAL SHOW". This turns off all music testing rules, including daypart testing, artist block testing, and also-protect testing] and simply plots songs for you special show. See [Music Categories](#).
2. In **[SETUP][CLOCKS]**, select that category as desired. You can create special clocks as desired and assign them to the hours during which the countdown show runs.
3. In **[Music Library][Song Browser]**, open each song and click the "Research" tab and select the appropriate SPECIAL SHOW CATEGORY. You can also drag-and-drop or mass-change songs into the SPECIAL SHOW CATEGORY. Note: The SPECIAL SHOW CATEGORY and the Music CATEGORY of a song are 2 different entries.
4. When Natural Music generates the log and sees the "SPECIAL SHOW CATEGORY" on the clock, it will retrieve the songs with that CATEGORY assigned to the SPECIAL SHOW CATEGORY value on those songs.